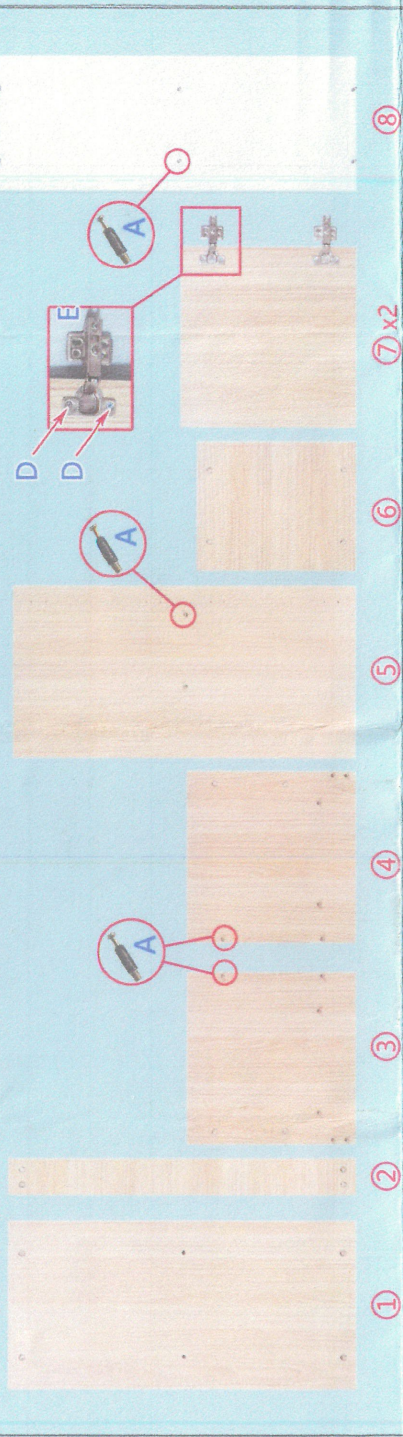


PCG80 ASSEMBLY INSTRUCTION

~~PCG80~~ ZKOZ

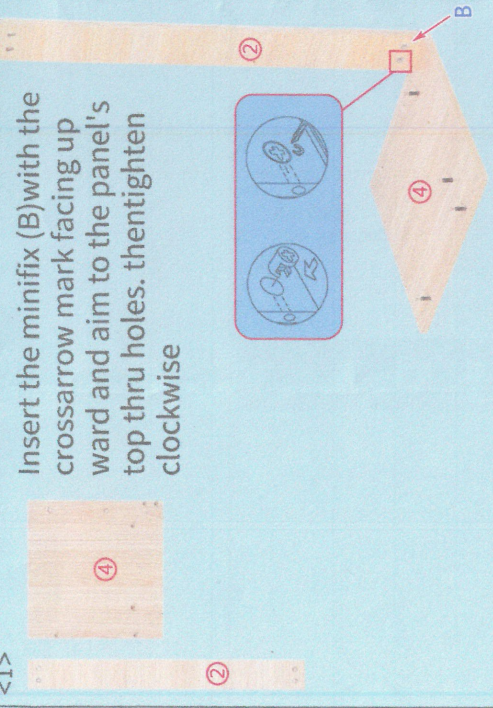
Thanks for buying our products, read it carefully before installation.
 Please contact us in case of any problem, regarding assembly or the product itself, a smileon your face is our top priority.
 (Attention: Don't tighten the screw before all screws are in place)

	A*20		B*20		C*2		D*24		E*4
-------------------------------------------------------------------------------------	------	-------------------------------------------------------------------------------------	------	------------------------------------------------------------------------------------	-----	-----------------------------------------------------------------------------------	------	-----------------------------------------------------------------------------------	-----



1 2 3 4 5 6 7 x2 8

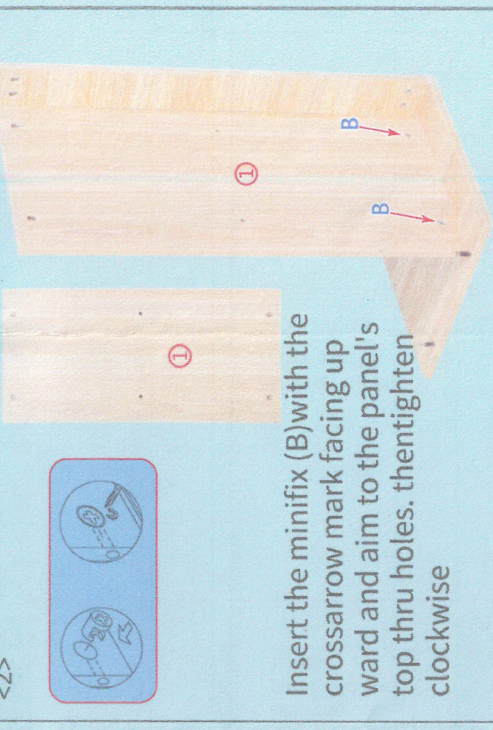
<1>



2 4 B

Insert the minifix (B) with the crossarrow mark facing up ward and aim to the panel's top thru holes. then tighten clockwise

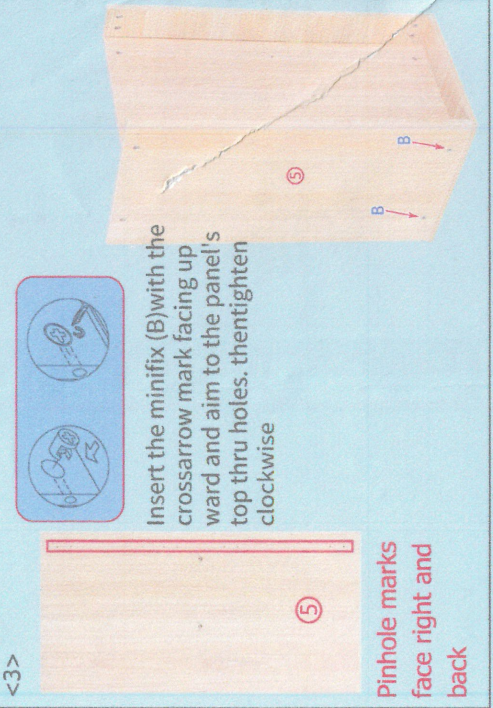
<2>



1 B B

Insert the minifix (B) with the crossarrow mark facing up ward and aim to the panel's top thru holes. then tighten clockwise

<3>

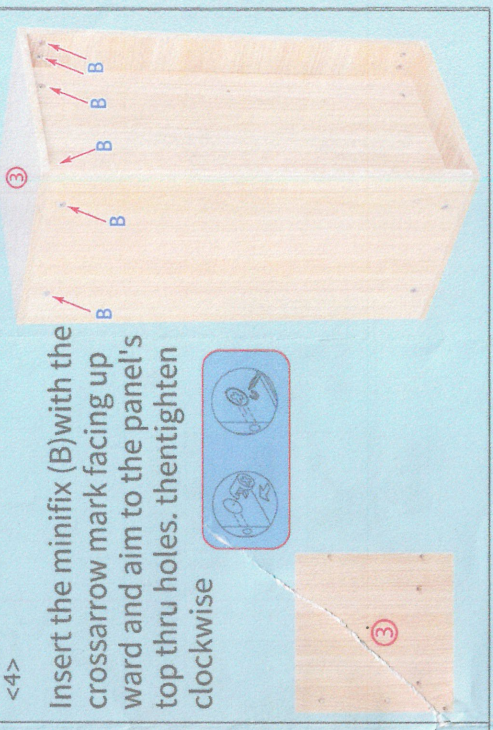


5 B B

Insert the minifix (B) with the crossarrow mark facing up ward and aim to the panel's top thru holes. then tighten clockwise

Pinhole marks face right and back

<4>

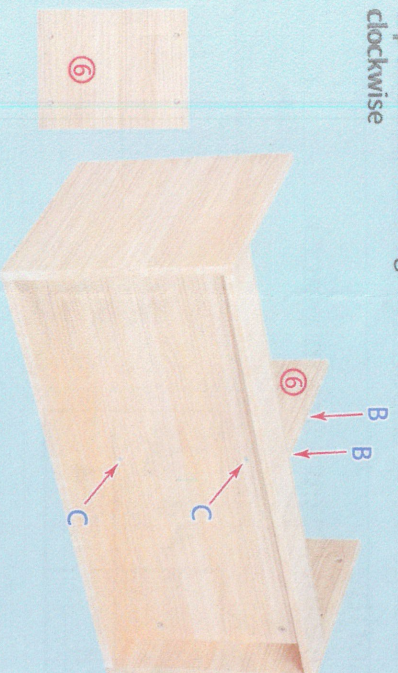
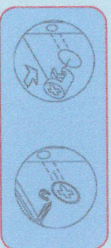


3 B B B B

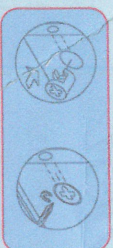
Insert the minifix (B) with the crossarrow mark facing up ward and aim to the panel's top thru holes. then tighten clockwise

<5> Turn 90 degrees to the left

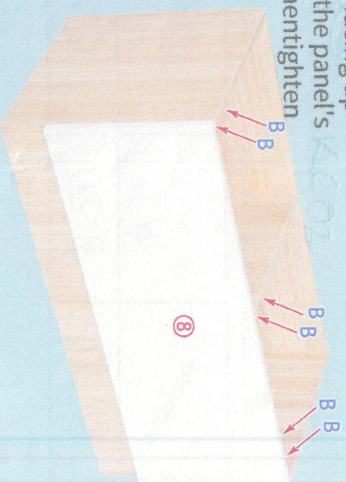
Insert the minifix (B) with the crossarrow mark facing up ward and aim to the panel's top thru holes. then tighten clockwise



<6> Straighten out the overall structure

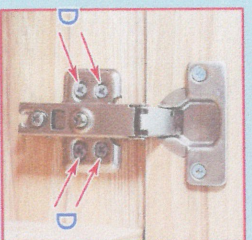


Insert the minifix (B) with the crossarrow mark facing up ward and aim to the panel's top thru holes. then tighten clockwise



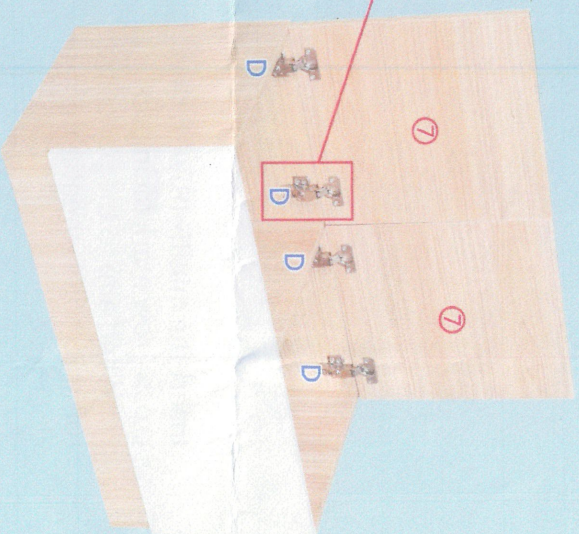
The side with the long spacing at the bottom

<7>



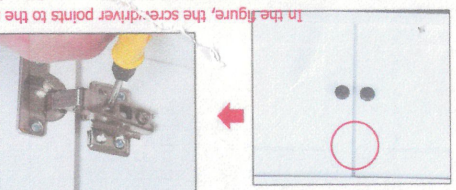
The position of the mounting chain is marked on the board with a needle eye and fixed with a minimum self-tapping screw

Screw in two screws first. After the door panel is properly adjusted, screw in all screws



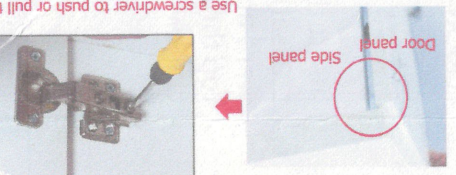
Door panel adjustment

The door gap is too large



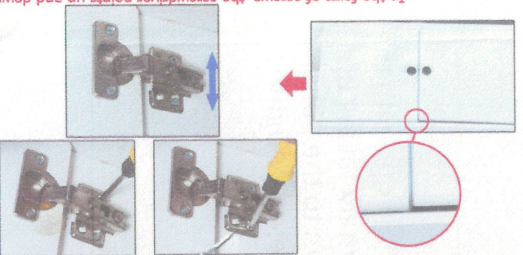
In the figure, the screw-driver points to the screw to adjust the left and right movement of the door panel, while clockwise rotation adjusts the right movement of the door panel.

Excessive gap between door panel and side panel



Use a screwdriver to push or pull the door panel in or out, and then tighten to solve the above problem.

Uneven height door panel



In the form of screws, the screwdriver points up and down to push the door panels and hinges, then tighten the screws, push down the upper and lower door panels and hinges, and then tighten the screws.