






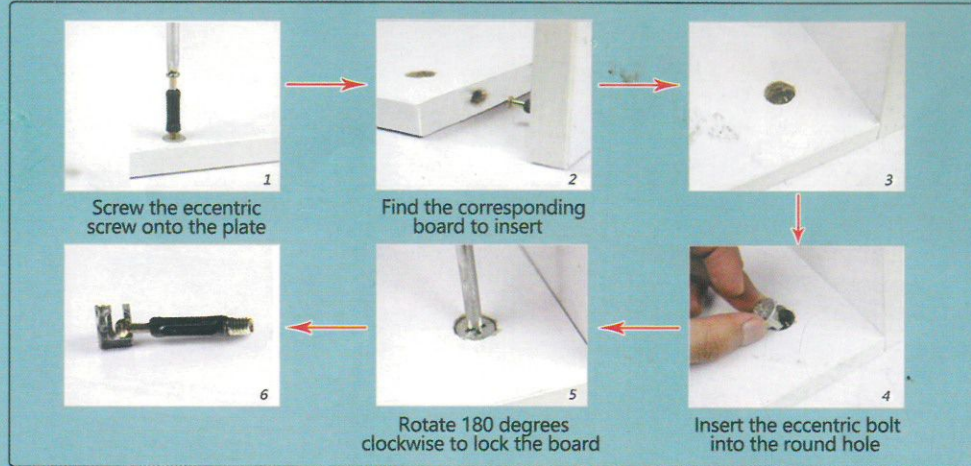


# Installation diagram of flip bucket shoe cabinet

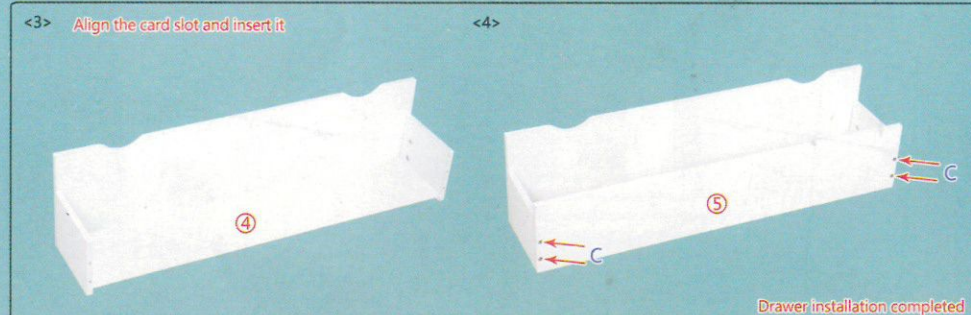
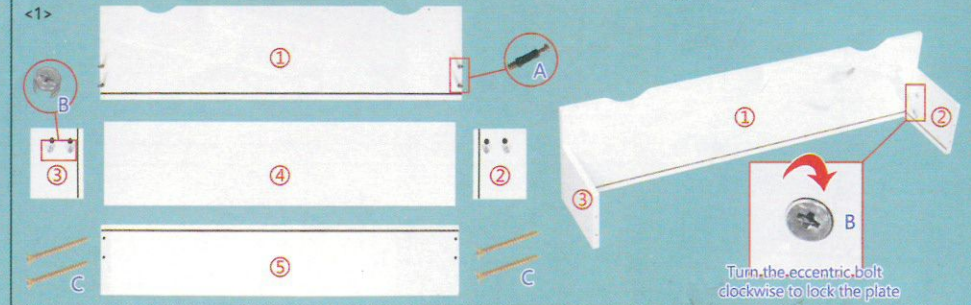
15C-06

						
Eccentric screw	Eccentric bolt	3.5CM self tapping screw	Metal pin	Jamb	Connecting components	Minimum self tapping screw
A*8	B*8	C*24	D*2	E*4	F*4	G*20

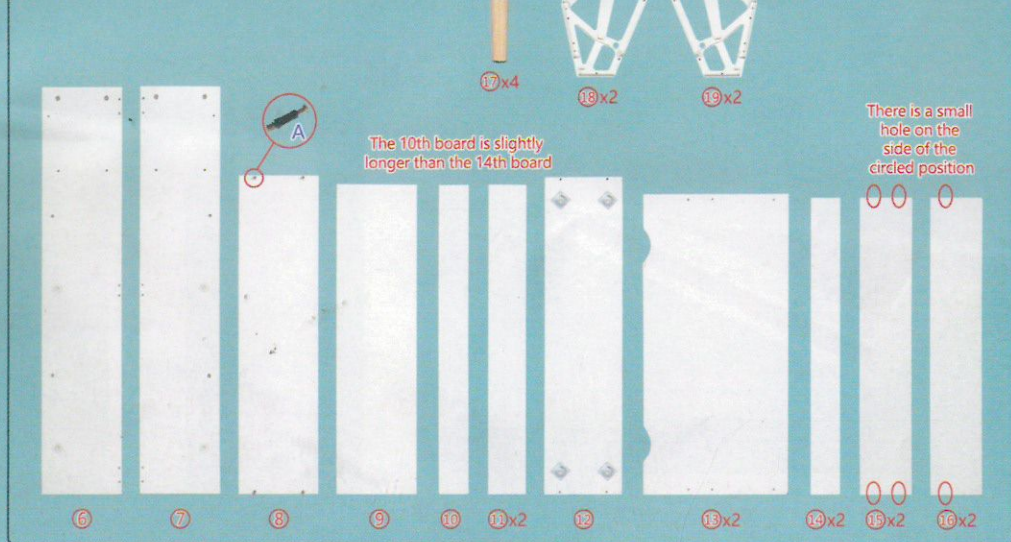
## Eccentric installation principle



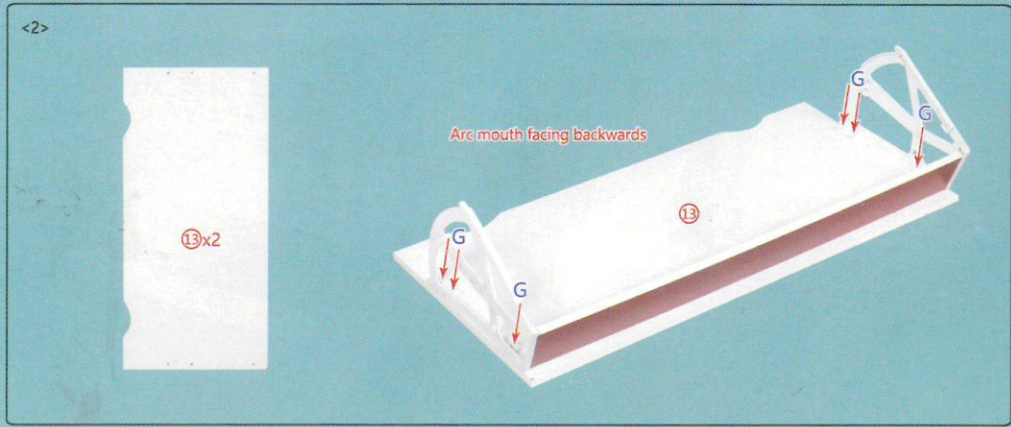
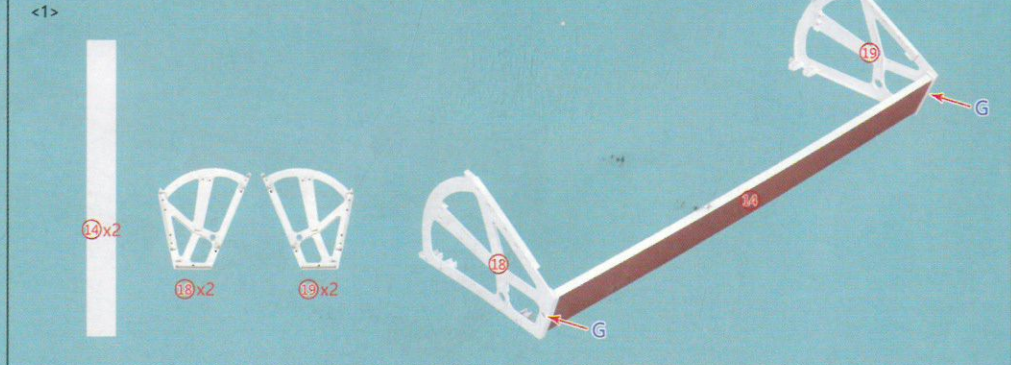
## Installation of drawer section



## Plate part



## Step 1: Installation of the tipping bucket section



<3>

There is a small hole on the side of the circled position

15x2

Two sets of tipping bucket parts need to be completed in total

Step 2: Overall Part Installation

<1>

Non penetrating small hole facing inward and downward

6 7 8

<5>

12

<6>

Twist clockwise into the cabinet leg

17x4

<2>

9

<1>

B

Turn the eccentric bolt clockwise to lock the plate

<7>

E

F

Align the connector and insert it

G

Fix with the smallest self tapping screw

<8>

There is a small hole on the side of the circled position

16x2

<3>

The 10th board is slightly longer than the 14th board

10

<4>

11x2

<9>

Drawer tilted 45 degrees and pushed in

D

Insert the metal pin, which is used to prevent the drawer from falling when pulled out

<10>