

3C-02

Installation diagram of four doors on the coffee table

			
Eccentric screw	Eccentric bolt	3.5CM self tapping screw	Metal pin
A*8	B*8	C*8	D*12

Eccentric installation principle

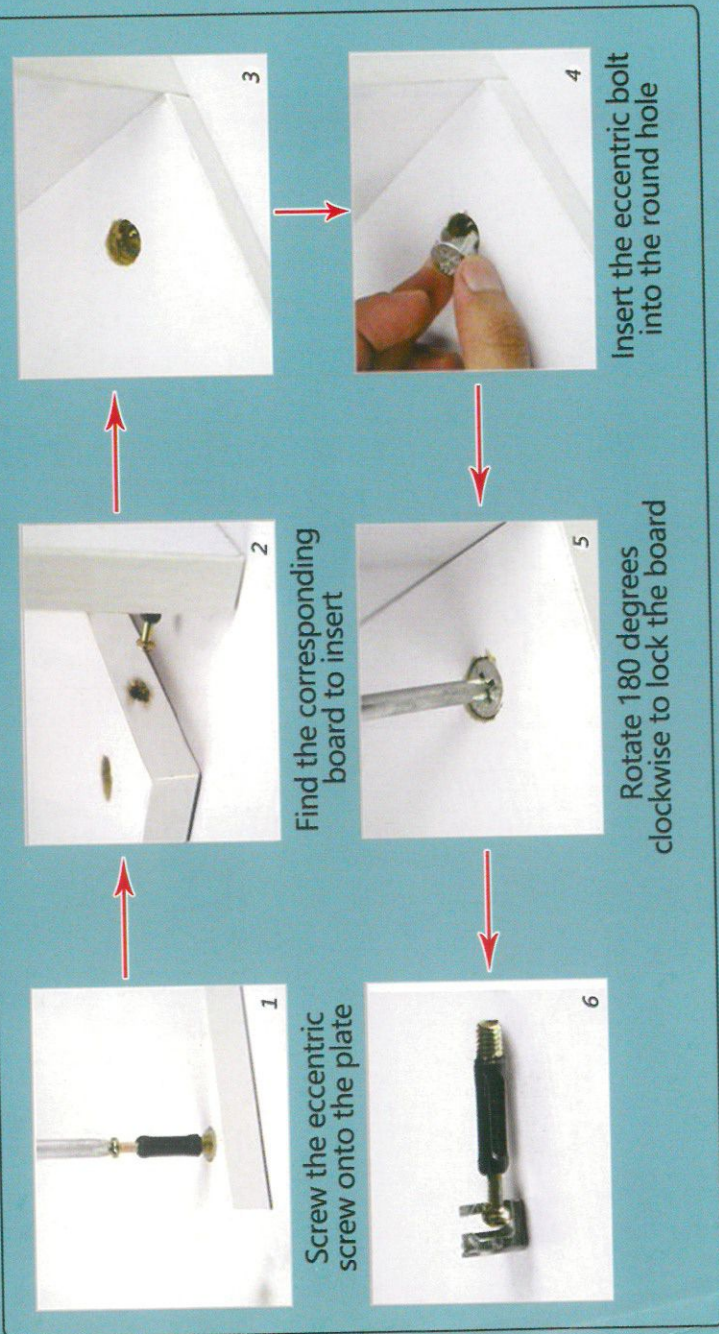
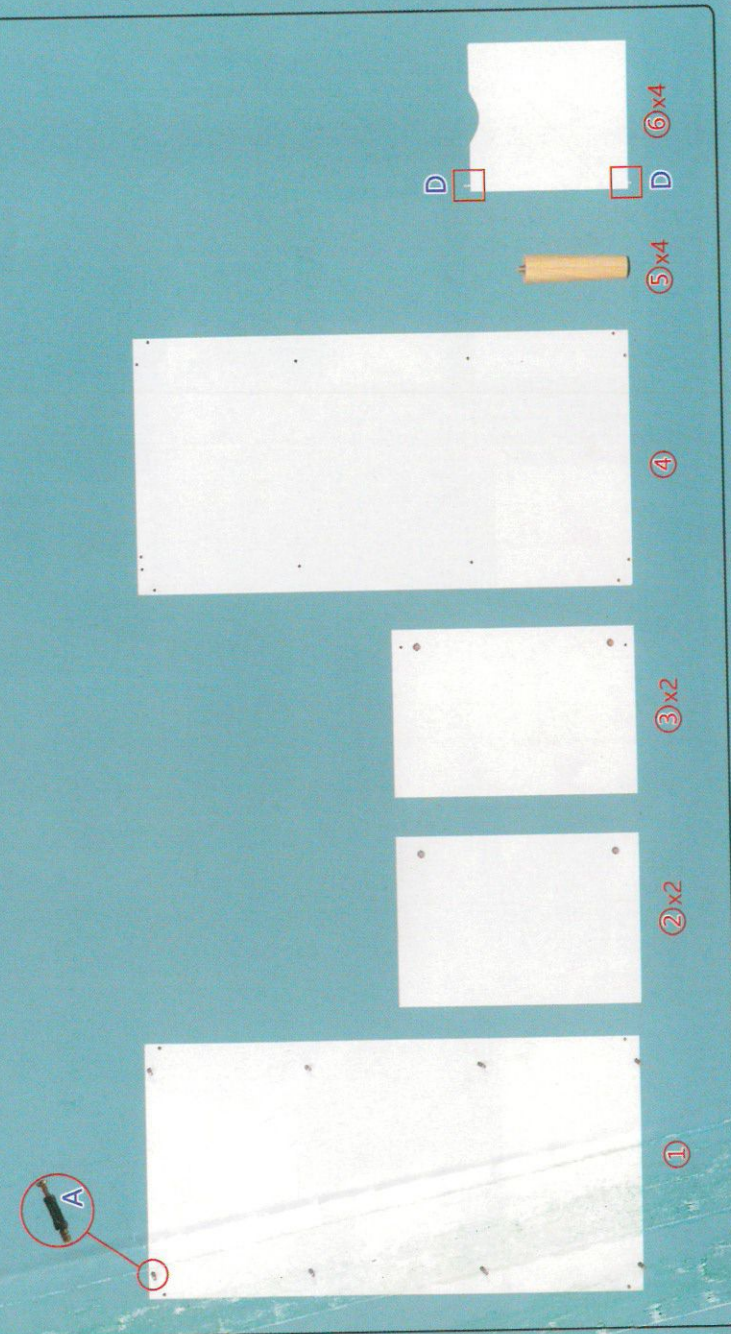
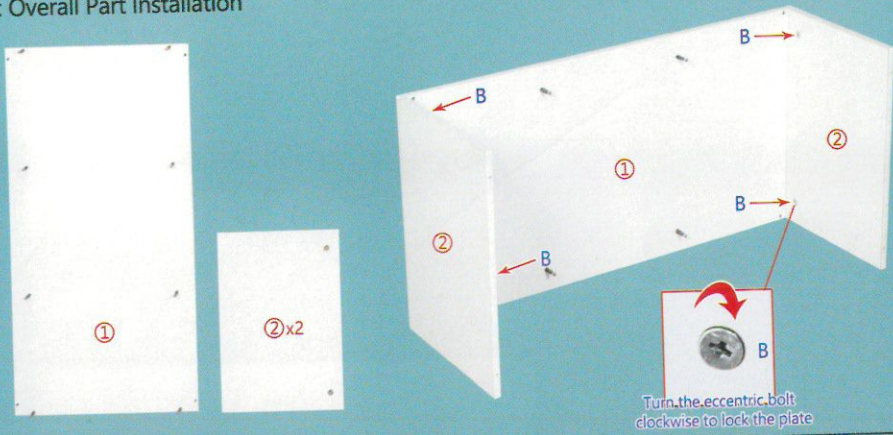


Plate part



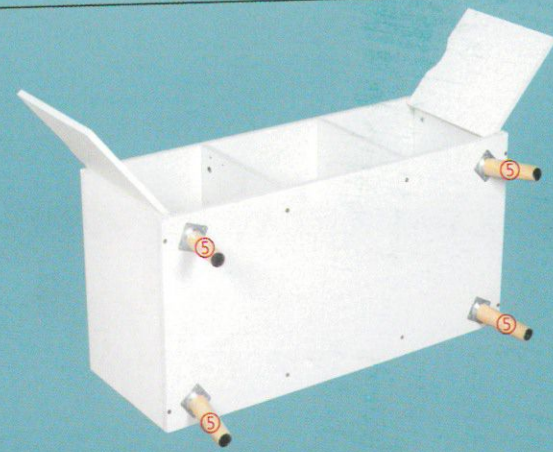
Step 1: Overall Part Installation

<1>

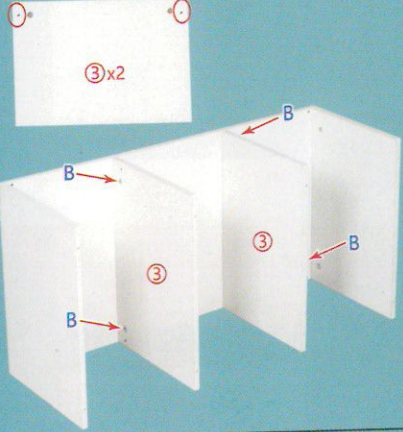


<5>

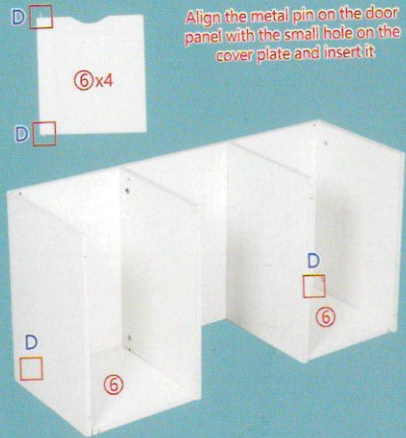
Align the cabinet legs clockwise with the iron sheet and screw them in



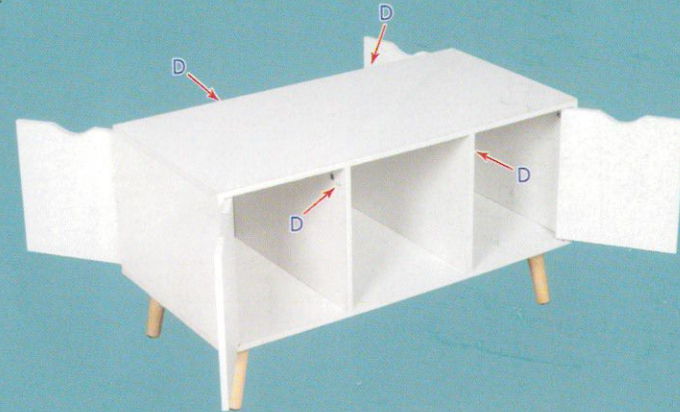
<2> Small hole facing the side panel



<3>

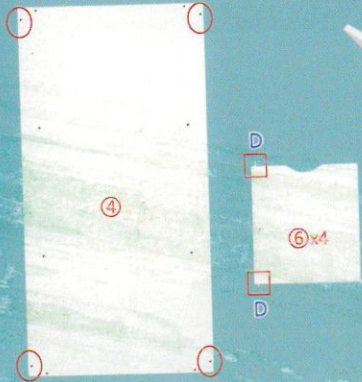


<6> Overall alignment



<4>

Align the small hole with the metal pin on the door panel and insert it



Align the bottom plate with the metal pin on the door panel and insert it



<7>

