

SC-01

Double door installation diagram of coffee table

			
Eccentric screw	Eccentric bolt	3.5CM self tapping screw	Metal pin
A*6	B*6	C*6	D*6

Eccentric installation principle

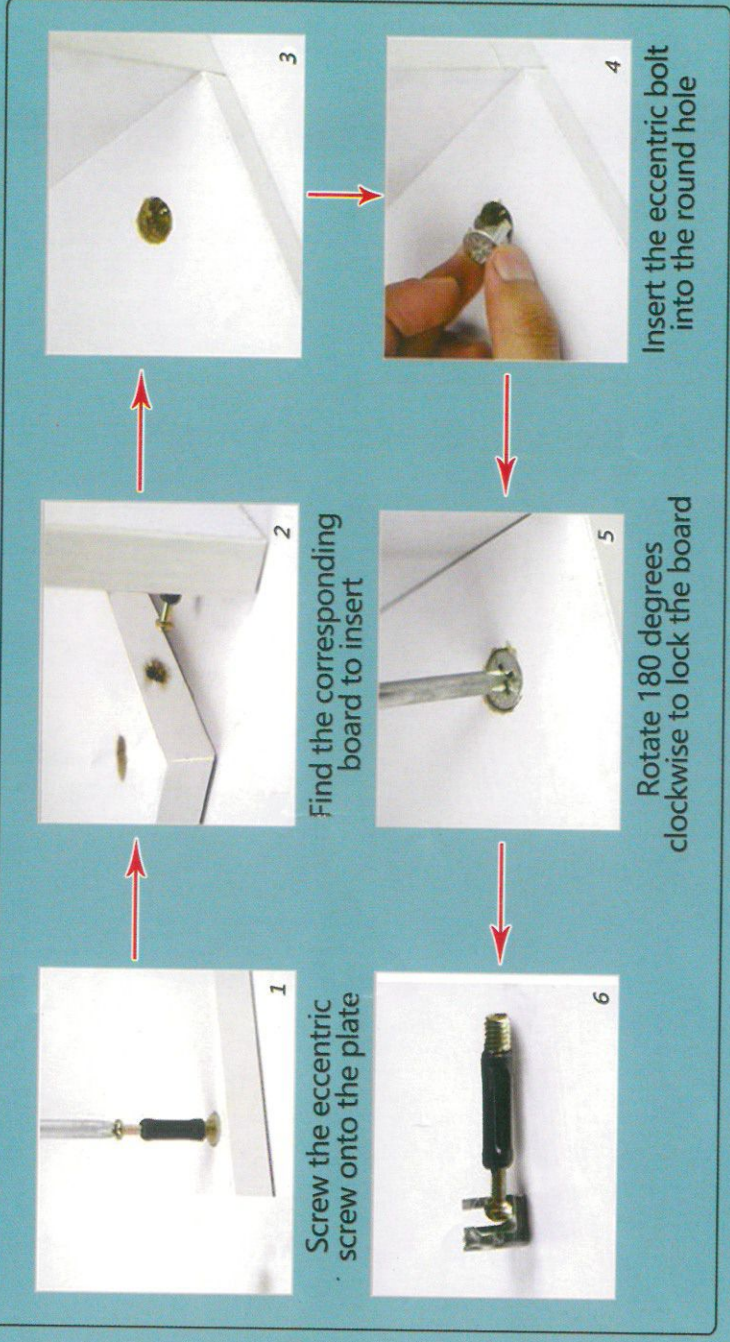
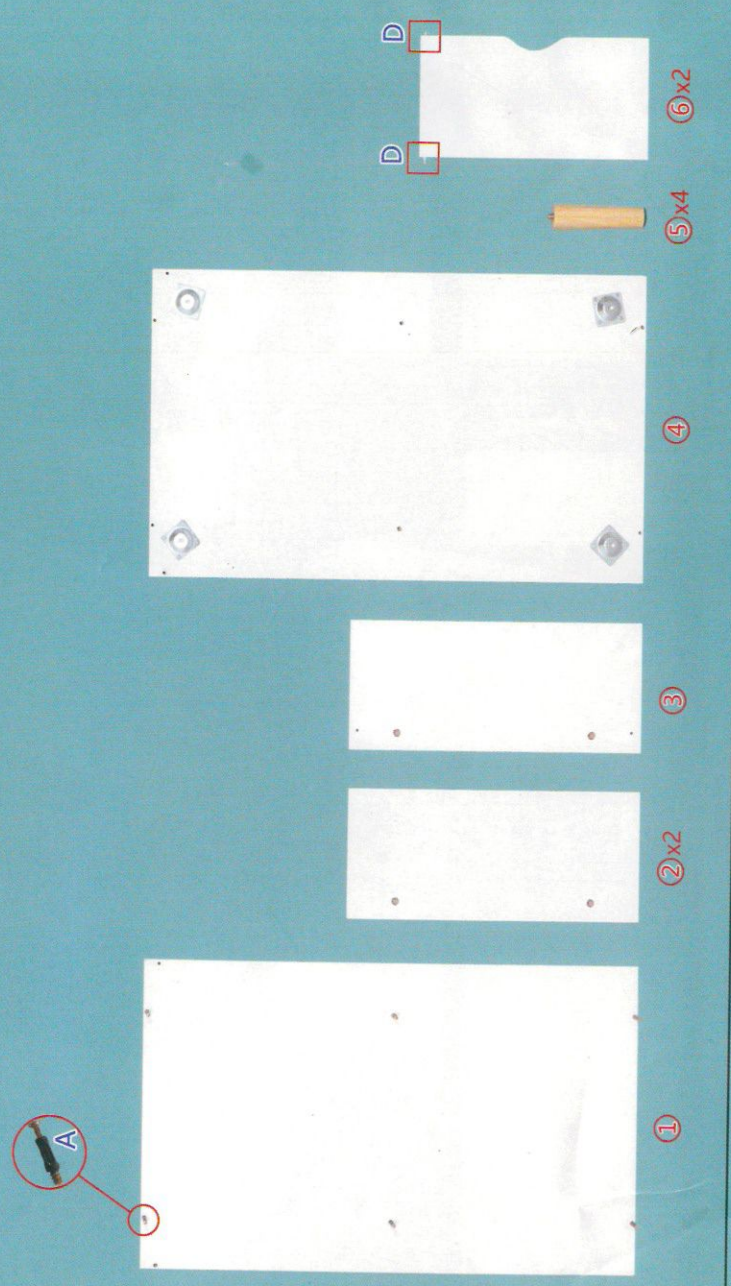


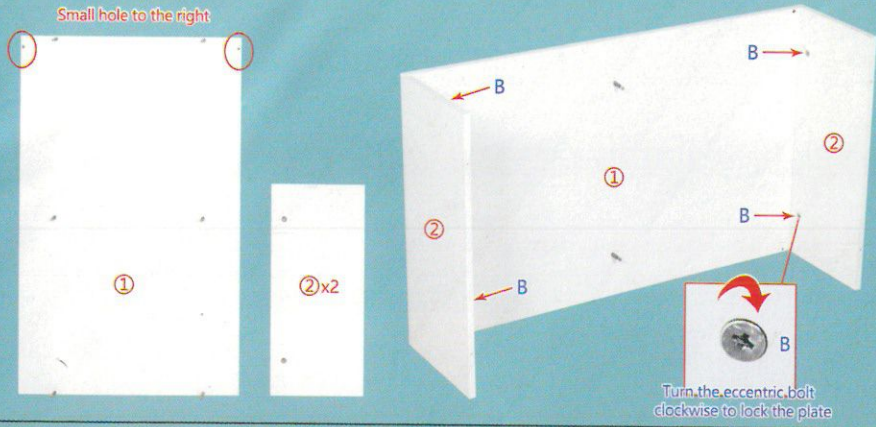
Plate part



Step 1: Overall Part Installation

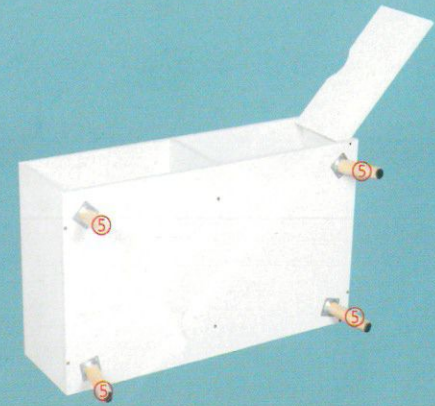
<1>

Small hole to the right

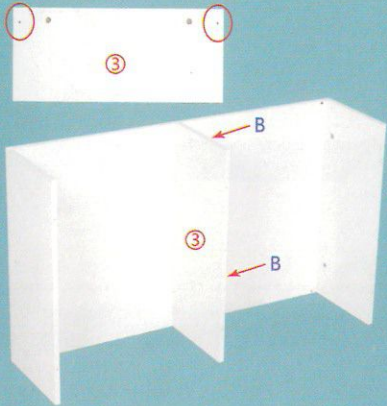


<5>

Align the cabinet legs clockwise with the iron sheet and screw them in

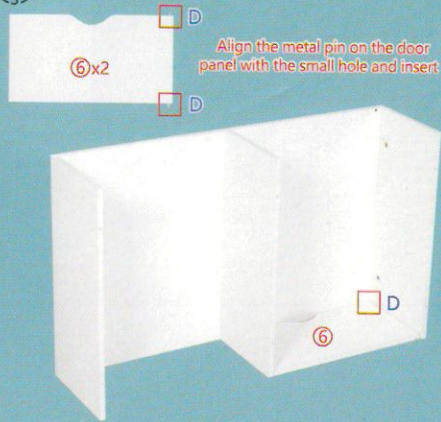


<2> Circle the small hole to the right

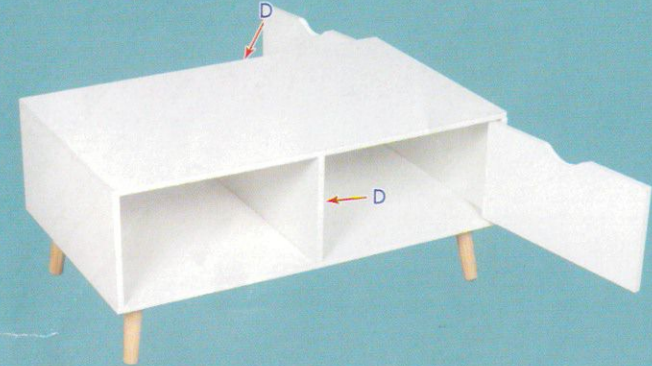


<3>

Align the metal pin on the door panel with the small hole and insert it

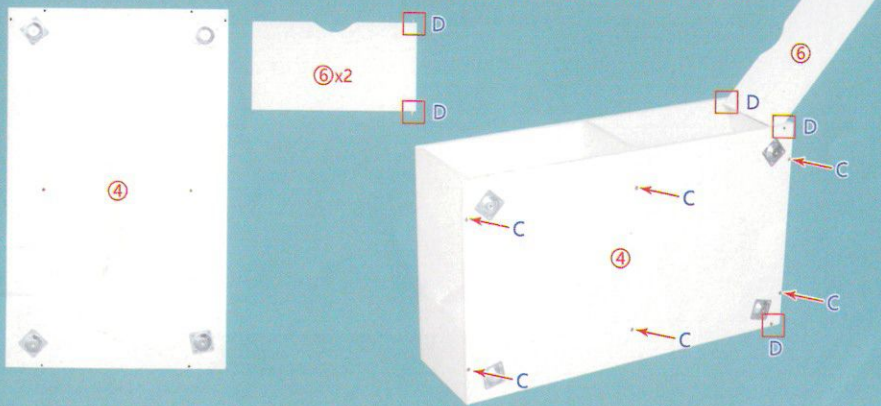


<6> Overall alignment



<4>

Align the small hole on the bottom plate with the metal pin on the door panel and insert it



<7>

